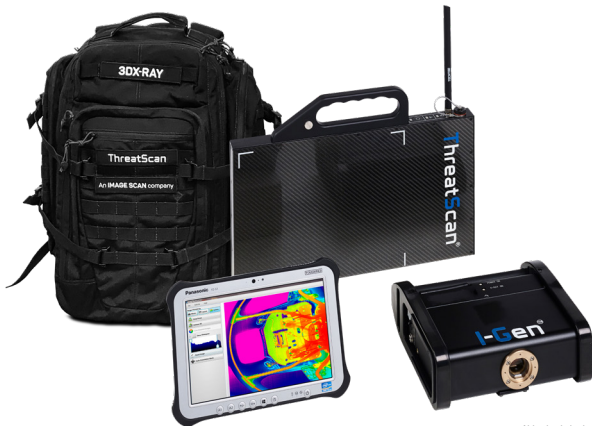


# 3DX-RAY



with tablet and back pack

## ThreatScan®-LS3

- Suspect item inspection
- EOD evaluation
- Customs control
- Vehicle scanning
- Complete system fits in a backpack

Portable, real-time x-ray scanning system

**ThreatScan®-LS3 is a compact, portable, battery powered x-ray scanning system designed in co-operation with first responders and EOD teams to meet the needs of the field operative.**

**Quick and simple to deploy, the system produces high quality real-time x-ray images for rapid and accurate decision making.**

The compact detector panel is positioned behind the target; the generator is placed in front. The scan is activated from the laptop imaging station.

The smaller 305mm x 256mm imaging area of the ThreatScan®-LS3 still enables the operator to scan suspect items in a single scan.

The I-Gen can penetrate up to 40mm steel at 120kV and up to 60mm at 150kV.

The LS3 system produces sub-millimetre resolution images and there is a range of sophisticated image processing functions available including materials discrimination, pan, zoom, DeepFocus™, 3D Emboss, measurement and annotation.

These options and the high quality images enable the operator to interpret the image quickly and accurately.

The software can also communicate the image on screen to a remote command centre and save images in JPEG and other common file formats.

The standard package comprises a compact x-ray detector panel (using linear photo-diode array), 120kV or 150kV x-ray generator, laptop computer, ThreatSpect software, batteries, chargers, wireless communication and transport case.

Options include backpack, tablet pc, tripod, repeater station, spare batteries and chargers, soft carry case, wired and fibre optic cable sets.

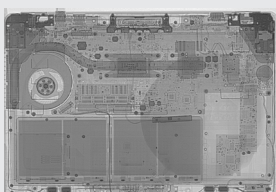
**Ideal for use by First Responders, EOD teams, Counter Surveillance, and Customs and Security Operatives**

### The system comprises

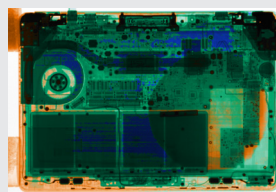
- A compact detector panel
- A portable and robust x-ray generator (120kV or 150kV)
- A laptop imaging station
- Batteries and chargers
- Wireless communication
- One carry case for whole system
- ThreatSpect software

### Features

- High penetration with sub-millimetre resolution
- Compact detector panel
- Real-time images
- Designed for rapid deployment and ease of use
- Powerful image enhancement and analysis tools
- Intuitive, user-friendly ThreatSpect software
- Scans to 3mm above floor level



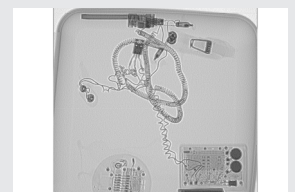
X-ray of laptop with IED



Materials discrimination

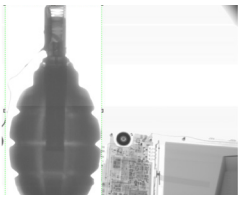


Set of IED devices

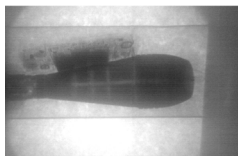


DeepFocus™

# ThreatScan®-LS3



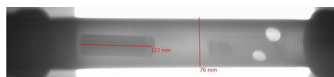
Sub region enhancement



Penetration behind 25cm concrete



Optional I-Gen stand (360° rotation)



Measurement



Invert

## X-Ray Detector Panel (LS3)

Image / detector resolution	640 pixels, 40AWG, 400 micron
Dynamic range	65536 (16-bit)
Image acquisition / scan speed	2.7 seconds
Detector dimensions	462mm x 273mm x 35mm (external) (L x H x D)
Imaging / scanning area	305mm x 256mm / scans to 3mm above floor level
Weight	2.7kg (3.2kg with battery)
Power	Self contained rechargeable lithium ion battery (8-hr standby)
Communication protocols	Wireless 802.11 a/b/g/n (Wired or fibre optic options, TCP/IP ethernet)
Operating temperature	-20°C to +55°C / MIL-STD-810F 501.4 and 502.4
Storage temperature	-40°C to +80°C / MIL-STD-810F 501.4 and 502.4
Humidity	0% to 95% non-condensing

## X-Ray Generator (I-Gen)

	120kV	150kV
Type	120kV (30-120kV) 1mA	150kV (30-150kV) 1mA
Penetration	38mm guaranteed, 40mm typical	55mm guaranteed, 60mm typical
Focal spot size / Beam angle	0.5 x 0.5mm / 40° x 40°	
Pre-warn	0-99 seconds	
Power	Self contained rechargeable cells (2500mAh) Up to 225 images on one charge (2 hour charge) Mains power option	
Weight (without battery)	5.5 kg (6.6kg including battery and handle)	
Size (L x W x H)	245mm x 180mm x 80mm	

## Communications

Wireless (as standard)	802.11g / up to 120m range (extendable with repeaters)
Fibre optic (option)	100m, 150m, 200m
Ethernet (option)	25m, 50m

## Imaging Station\*

Type	Laptop computer (ruggedised / tablet options available) <i>* PC specification to be confirmed &amp; agreed at order stage</i>
Processor	Intel Core i5-4200U, Dual Core
Display	15.6" Full High Definition (1366x768) LED Display with AntiGlare
Memory	4GB 1600MHz DDR3L (RAM)
Hard Drive	500GB Serial ATA Hard Drive
Operating System	English MS Windows

## Software Features

Adjustable x-ray source parameters (kV, mA & time)
Standard, Inverted and False Colour images
Rotate, Histogram, Pan, Zoom, DeepFocus™
On-screen Measurement and Annotation (options)
Materials Discrimination and 3D Emboss (options)
Image Stitching (option)
Multi-file format import (option)
Multi-touch functionality for tablet based operation (option)

## Safety

Physical safety interlock plus key switch
Audible & visible warning signs
CE compliant

## Certification & Codes

NATO	Codification NSN 6350-99-306-9048
------	-----------------------------------

[www.3dx-ray.com](http://www.3dx-ray.com)

T. +44 (0) 1509 817400 F. +44 (0) 1509 817401 E. [sales@3dx-ray.com](mailto:sales@3dx-ray.com)

3DX-RAY Ltd, 16 & 18 Hayhill Industrial Estate,  
Barrow upon Soar, Leicestershire, LE12 8LD, UK

An **IMAGE SCAN** company

Registered address: 16 & 18, Hayhill Industrial Estate,  
Barrow upon Soar, Leicestershire, LE12 8LD, UK.  
Registered in England No. 3237543.

