

3DX-RAY



with tablet and back pack

ThreatScan2®-LS3

TWICE THE RESOLUTION

- Suspect item inspection
- EOD evaluation
- Customs control
- Vehicle scanning
- Complete system fits in a back pack

Portable, real-time x-ray scanning system

ThreatScan2®-LS3 is a compact, portable, battery powered x-ray scanning system designed in co-operation with first responders and EOD teams to meet the needs of the field operative.

Quick and simple to deploy, the system produces high quality real-time x-ray images for rapid and accurate decision making.

The compact detector panel is positioned behind the target; the generator is placed in front. The scan is activated from the laptop imaging station.

The smaller 305mm x 256mm imaging area of the panel still enables the operator to scan suspect items in a single scan.

The I-Gen can penetrate up to 34mm steel at 120kV and up to 65mm at 150kV.

The system produces sub-millimetre resolution images and there is a range of sophisticated image processing functions available including materials discrimination, pan, zoom, DeepFocus™, 3D Emboss, measurement and annotation.

These options and the high quality images enable the operator to interpret the image quickly and accurately.

The software can also communicate the image on screen to a remote command centre and save images in JPEG and other common file formats.

The standard package comprises a compact x-ray detector panel (using linear photo-diode array), 120kV or 150kV x-ray generator, laptop computer, ThreatSpect software, batteries, chargers, wireless communication and transport case.

Options include backpack, tablet pc, tripod, repeater station, spare batteries and chargers, soft carry case, wired and fibre optic cable sets.

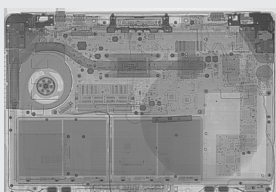
Ideal for use by First Responders, EOD teams, Counter Surveillance, and Customs and Security Operatives

The system comprises

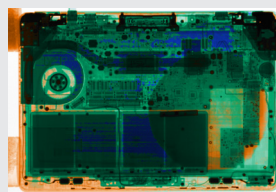
- A compact detector panel
- A portable and robust x-ray generator (120kV or 150kV options)
- A laptop imaging station
- Batteries and chargers
- Wireless communication
- One carry case for whole system
- ThreatSpect software

Features

- High penetration with sub-millimetre resolution
- Compact detector panel
- Real-time images
- Designed for rapid deployment and ease of use
- Powerful image enhancement and analysis tools
- Intuitive, user-friendly ThreatSpect software
- Scans to 3mm above floor level



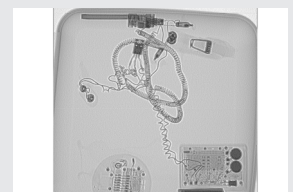
X-ray of laptop with IED



Materials discrimination



Set of IED devices

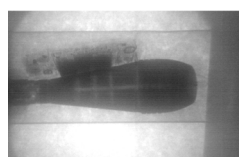


DeepFocus™

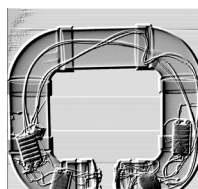
ThreatScan2®-LS3



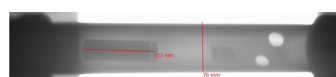
Sub region enhancement



Penetration behind 25cm concrete



3D Emboss



Measurement



Optional I-Gen stand (360° rotation)

X-Ray Detector Panel (LS3)

Image / detector resolution	1280 pixels, 44AWG, 200 micron
Dynamic range	65536 (16-bit)
Image acquisition / scan speed	2.7 seconds
Detector dimensions	462mm x 273mm x 35mm (external) (L x H x D)
Imaging / scanning area	305mm x 256mm / scans to 3mm above floor level
Weight	2.7kg (3.2kg with battery)
Power	Self contained rechargeable lithium ion battery (8-hr standby)
Communication protocols	Wireless 802.11 a/b/g/n Wired or fibre optic options, TCP/IP ethernet
Operating temperature	-20°C to +55°C / MIL-STD-810F 501.4 and 502.4
Storage temperature	-40°C to +80°C / MIL-STD-810F 501.4 and 502.4
Humidity	0% to 95% non-condensing

X-Ray Generator (I-Gen)

120kV

150kV

Type	120kV (40-120kV) 1mA	150kV (40-150kV) 1mA
Penetration	30mm guaranteed, 34mm typical	60mm guaranteed, 65mm typical
Focal spot size / Beam angle	0.5 x 0.5mm / 40° x 40°	
Pre-warn	0-99 seconds	
Power	Self contained rechargeable cells (2500mAh) Up to 225 images on one charge (2 hour charge) Mains power option	
Weight (without battery)	5.5 kg (6.6kg including battery and handle)	
Size (L x W x H)	245mm x 180mm x 80mm	

Communications

Wireless (as standard)	802.11g / up to 120m range (extendable with repeaters)
Fibre optic (option)	100m, 150m, 200m
Ethernet (option)	25m, 50m

Imaging Station*

Type	Laptop computer (ruggedised / tablet options available) <i>* PC specification to be confirmed & agreed at order stage</i>
Processor	Intel Core i5-4200U, Dual Core
Display	15.6" Full High Definition (1366x768) LED Display with AntiGlare
Memory	4GB 1600MHz DDR3L (RAM)
Hard Drive	500GB Serial ATA Hard Drive
Operating System	English MS Windows

Software Features

- Adjustable x-ray source parameters (kV, mA & time)
- Standard, Inverted and False Colour images
- Rotate, Histogram, Pan, Zoom, DeepFocus™
- On-screen Measurement and Annotation (options)
- Materials Discrimination and 3D Emboss (options)
- Image Stitching (option)
- Multi-file format import (option)
- Multi-touch functionality for tablet based operation (option)

Safety

- Physical safety interlock plus key switch
- Audible & visible warning signs
- CE compliant

Certification & Codes

NATO	Codification NSN 6350-99-306-9048
------	-----------------------------------

www.3dx-ray.com

T. +44 (0) 1509 817400 F. +44 (0) 1509 817401 E. sales@3dx-ray.com

3DX-RAY Ltd, 16 & 18 Hayhill Industrial Estate,
Barrow upon Soar, Leicestershire, LE12 8LD, UK

An **IMAGE SCAN** company

Registered address: 16 & 18, Hayhill Industrial Estate,
Barrow upon Soar, Leicestershire, LE12 8LD, UK.
Registered in England No. 3237543.

