

# 3DX-RAY



## ThreatScan®-LS3

- K-120 generator option
- EOD evaluation
- Customs control
- Vehicle scanning
- Suspect item inspection

Portable, real-time x-ray scanning system

**ThreatScan®-LS3 with K-120 is a lightweight, portable, battery powered x-ray scanning system designed in co-operation with first responders and EOD teams to meet the needs of the field operative.**

**Quick and simple to deploy, the system produces quality real-time x-ray images for immediate decision making.**

The detector panel is positioned behind the target; the generator is placed in front.

The scan is activated from the laptop imaging station.

The 305mm x 256mm imaging area of the ThreatScan®-LS3 enables the operator to scan typical bags and packages in a single scan.

Penetrating up to 29mm steel at 120kV the ThreatScan®-LS3 with K-120 produces sub-millimetre resolution images.

A range of sophisticated image processing functions, including materials discrimination, pan, zoom, DeepFocus™,

3D Emboss, measurement and annotation, coupled with good quality images enable the operator to interpret the image quickly and accurately.

The software can also communicate the image on screen to a remote command centre and save images in JPEG and other common file formats.

**Ideal for use by First Responders, EOD teams, Counter Surveillance, and Customs and Security Operatives**

### The system comprises

- A compact detector panel (LS3)
- A portable x-ray generator (K-120)
- A laptop imaging station
- Batteries and chargers
- Wireless communication
- Carry cases
- ThreatSpect software

### Features

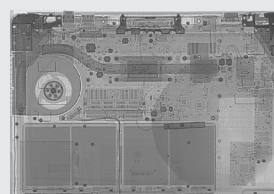
- High penetration with sub-millimetre resolution
- Real-time images
- Designed for rapid deployment and ease of use
- Powerful image enhancement and analysis tools
- Intuitive, user-friendly ThreatSpect software



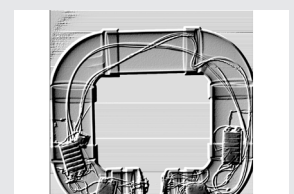
Annotated image



X-ray of grenade and mobile phone

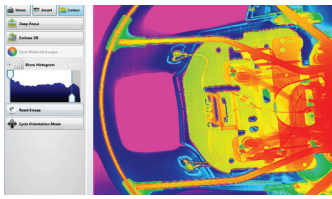


Improvised explosive device in laptop

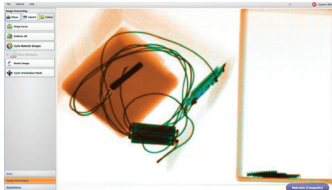


IED Emboss

# ThreatScan®-LS3 (K-120)



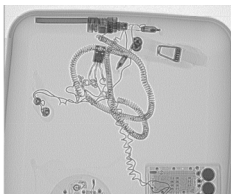
False colour



Material discrimination



K-120 generator



IED Deep Focus



LS3 detector panel

## Standard Package

X-ray detector panel, K-120 120kV x-ray generator, laptop computer, ThreatSpect software, batteries, chargers, wireless communication and transport cases.

Options include: tripod, boosters, spare batteries and chargers, soft carry cases, wired and fibre optic cable sets.

## X-Ray Detector Panel (LS3)

Image / detector resolution	640 pixels, 40AWG, 400 micron
Dynamic range	65536 (16-bit)
Image acquisition / scan speed	2.7 seconds
Detector dimensions	462mm x 273mm x 35mm (external) (L x H x D)
Imaging / scanning area	305mm x 256mm / scans to 3mm above floor level
Weight	2.7kg (3.2kg with battery)
Power	Self contained rechargeable lithium ion battery (8-hr standby)
Communication protocols	Wireless 802.11 a/b/g/n Wired or fibre optic options, TCP/IP ethernet
Operating temperature	-20°C to +55°C / MIL-STD-810F 501.4 and 502.4
Storage temperature	-40°C to +80°C / MIL-STD-810F 501.4 and 502.4
Humidity	0% to 95% non-condensing

## X-Ray Generator (K-120)

Type	1mA constant potential 120kV
Power	Self contained rechargeable cells Up to 180 images on one charge (2 hour charge) Mains power option
Penetration	28mm guaranteed, 29mm typical
Weight (without battery)	6 kg
Size c/w handle (L x W x H)	470mm x 142mm x 215mm

## Communications

Wireless (as standard)	802.11g / up to 50m range (extendable with boosters)
Fibre optic (option)	100m, 150m, 200m
Ethernet (option)	25m, 50m

## Imaging Station\*

Type	Laptop computer (ruggedised / tablet options available) <i>* PC specification to be confirmed and agreed at order stage</i>
Processor	Intel Core i5-4200U, Dual Core
Display	15.6" Full High Definition (1366x768) LED Display with AntiGlare
Memory	4GB 1600MHz DDR3L (RAM)
Hard Drive	500GB Serial ATA Hard Drive
Operating System	English MS Windows

## Software Features

Adjustable x-ray source parameters (kV, mA & time)  
Standard, Inverted and False Colour images  
Rotate, Histogram, Pan, Zoom, DeepFocus™  
On-screen Measurement and Annotation (options)  
Materials Discrimination and 3D Emboss (options)  
Image Stitching (option)  
Multi-file format import (option)  
Multi-touch functionality for tablet based operation (option)

## Safety

Physical safety interlock key switch  
Audible & visible warning signs

## Certification & Codes

NATO	Codification NSN 6350-99-306-9048
------	-----------------------------------

[www.3dx-ray.com](http://www.3dx-ray.com)

T. +44 (0) 1509 817400 F. +44 (0) 1509 817401 E. [sales@3dx-ray.com](mailto:sales@3dx-ray.com)

3DX-RAY Ltd, 16 & 18 Hayhill Industrial Estate,  
Barrow upon Soar, Leicestershire, LE12 8LD, UK

An **IMAGE SCAN** company

Registered address: 16 & 18, Hayhill Industrial Estate,  
Barrow upon Soar, Leicestershire, LE12 8LD, UK.  
Registered in England No. 3237543.

