

# 3DX-RAY



## AXIS™-64SA

- Baggage scanning
- Package inspection
- Checkpoint control
- Mail scanning

Conveyor, real-time x-ray scanning system

The AXIS™-64SA is a compact design with the user console and monitor integrated into the system - stand alone (SA) configuration.

It is simple to install in small spaces and offers high throughput and ease of use, so is ideally suited to cabin baggage, small package and mailroom inspection.

Providing excellent image quality, materials discrimination, powerful image enhancement and processing functions for rapid and accurate interpretation of images.

The AXIS™-64SA ergonomic keyboard and intuitive software have been designed for ease of use.

Optimum clarity and resolution combined with a range of powerful image processing tools, including materials discrimination, help the operator to make fast and accurate decisions - thereby increasing throughput and decreasing the incidence of false alarms or missed threats.

The high quality systems offer excellent value for money to the security industry.

3DX-RAY offers a full range of support and maintenance services to meet the varying needs of the security sector, including 24/7 response.

**AXIS™ systems provide a competitively priced solution for standard screening scenarios.**

### Features

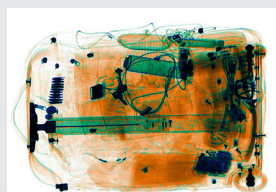
- 606mm (W) x 405mm (H) tunnel
- Powerful image enhancement and analysis tools
- Intuitive user-friendly software interface
- Threat Image Projection (TIP)

### Deployment

- Border control and Customs
- High security facilities and buildings
- Embassies
- Hotels
- Mailrooms



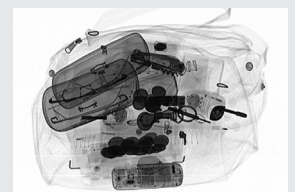
AXIS™-64SA



Materials discrimination



Optional rollers available



Handbag scan

# AXIS™-64SA

Inspection Unit	
Dimensions	1800mm (L) x 905mm (W) x 1257mm (H) (excluding monitor height)
Weight	400kg
Inspection tunnel	606mm (W) x 405mm (H)
Conveyor belt height	690mm (adjustable)
Conveyor speed	0.2m/sec
Maximum bag weight	165kg
No. of monitors	One (1) LCD widescreen
X-Ray Generator	
Type	High frequency monobloc
Tube voltage	150kV
Tube current	0.5mA
Beam orientation	Diagonal upwards
Power	
Power supply	Single phase 230VAC, +/- 10%
Frequency	50/60Hz +/- 3Hz
Power absorption	≤ 1.5kVA
Duty cycle	100%
Environmental	
Operating temperature	0°C to +40°C
Relative humidity	95% uncondensated
Storage temperature	-20°C to +60°C
Noise level	< 60dB
Safety	
X-ray emissions	Leakage dose at 10cm: < 1.0μSv / hour (0.1mR/h)
Film safety	Guaranteed up to ISO 1600/33 DIN
CE	CE compliant  The system fully meets the applicable international regulations for x-ray equipment

Imaging	
Resolution *	38 AWG guaranteed, 41 AWG typical
Penetration *	30mm steel guaranteed, 32mm typical
Detectors	Two (2) L-shaped rows of photodiodes
Standard Image Enhancement Features	
Imaging processing modes	Organic / inorganic materials discrimination
	Continuous contrast variation
	Continuous variation of penetration levels
	Reverse image
	Variable edge enhancement
	Energy stripping
	Pseudo colours
	Continuous Zoom x2 up to x64 and RotoZoom
	All features available in real time
Advanced Functions	
	Density alarm (adjustable threshold)
	Image storage on removable devices
Options	
	ADS
	TIP (Threat Image Projection)
	NetServer & TIPNet
	Digital session archiving
	Offline post-processing on work sessions
	Digital image archiving (AIMS) / AIMS networking
	Modular roller tables
	Second level remote display workstation(s)
	UPS
	Smart card login

\* using manufacturer's proprietary test piece

[www.3dx-ray.com](http://www.3dx-ray.com)

T. +44 (0) 1509 817400 F. +44 (0) 1509 817401 E. [sales@3dx-ray.com](mailto:sales@3dx-ray.com)

3DX-RAY Ltd, 16 & 18 Hayhill Industrial Estate,  
Barrow upon Soar, Leicestershire, LE12 8LD, UK

An **IMAGE SCAN** company

Registered address: 16 & 18, Hayhill Industrial Estate,  
Barrow upon Soar, Leicestershire, LE12 8LD, UK.  
Registered in England No. 3237543.

