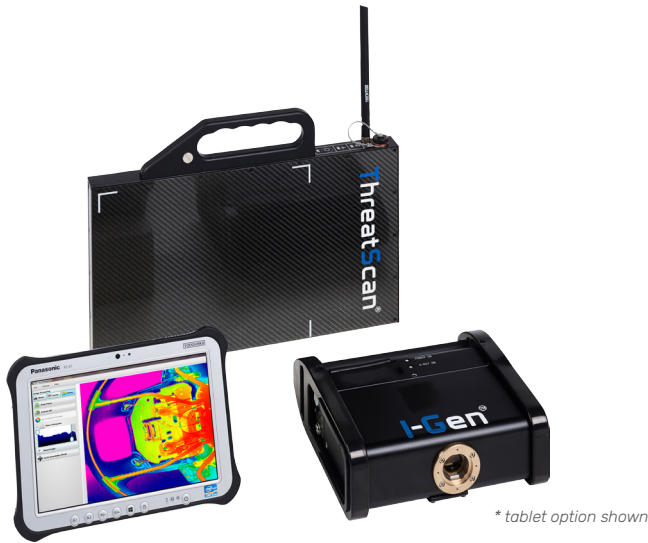


# 3DX-RAY



## ThreatScan®-LS3

- Suspect item inspection
- EOD evaluation
- Customs control
- Vehicle scanning
- Complete system fits in a backpack

Portable, real-time x-ray scanning system

**ThreatScan®-LS3 is a compact, portable, battery powered x-ray scanning system designed in co-operation with first responders and EOD teams to meet the needs of the field operative.**

**Quick and simple to deploy, the system produces high quality real-time x-ray images for rapid and accurate decision making.**

The compact detector panel is positioned behind the target; the generator is placed in front. The scan is activated from the laptop imaging station.

The smaller 305mm x 256mm imaging area of the ThreatScan®-LS3 still enables the operator to scan suspect items in a single scan.

Penetrating up to 34mm steel at 120kV the LS3 produces sub-millimetre resolution images.

A range of sophisticated image processing functions, including materials discrimination, pan, zoom, DeepFocus™,

3D Emboss, measurement and annotation, coupled with high quality images enable the operator to interpret the image quickly and accurately.

The software can also communicate the image on screen to a remote command centre and save images in JPEG and other common file formats.

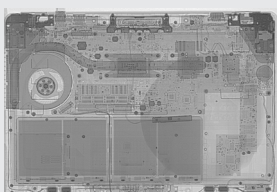
**Ideal for use by First Responders, EOD teams, Counter Surveillance, and Customs and Security Operatives**

### The system comprises

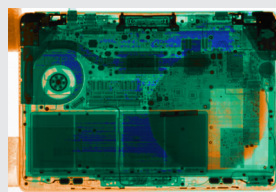
- A compact detector panel
- A portable and robust x-ray generator
- A laptop imaging station
- Batteries and chargers
- Wireless communication
- One carry case for whole system
- ThreatSpect software

### Features

- High penetration with sub-millimetre resolution
- Compact detector panel
- Real-time images
- Designed for rapid deployment and ease of use
- Powerful image enhancement and analysis tools
- Intuitive, user-friendly ThreatSpect software
- Scans to 3mm above floor level



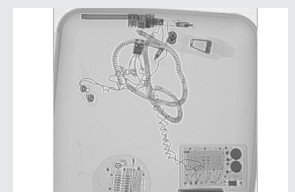
X-ray of laptop with IED



Materials discrimination



Set of IED devices

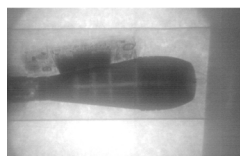


DeepFocus™

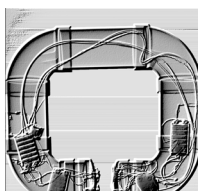
# ThreatScan®-LS3



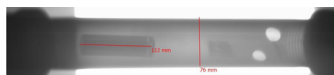
Sub region enhancement



Penetration behind 25cm concrete



3D Emboss



Measurement



Invert

## Standard Package

Compact x-ray detector panel, 120kV x-ray generator, laptop computer, ThreatSpect software, batteries, chargers, wireless communication and transport case.

Options include: backpack, tablet pc, tripod, repeater station, spare batteries and chargers, soft carry case, wired and fibre optic cable sets.

## X-Ray Detector Panel

Image / detector resolution	640 pixels, 40AWG
Dynamic range	65536 (16-bit)
Image acquisition / scan speed	2.7 sec
Detector dimensions	462mm x 273mm x 35mm (external) (L x H x D)
Imaging / scanning area	305mm x 256mm / scans to 3mm above floor level
Weight	2.7kg (3.2kg with battery)
Power	Self contained rechargeable lithium ion battery
Communication protocols	Wireless 802.11 a/b/g/n Wired or fibre optic options, TCP/IP ethernet
Operating temperature	-10°C to +40°C / MIL-STD-810F 501.4 and 502.4
Humidity	0% to 95% non-condensing

## X-Ray Generator

Type	1mA constant potential 120kV
Power	Self contained rechargeable cells Up to 180 images on one charge (2 hour charge) Mains power option
Penetration	30mm guaranteed, 34mm typical
Weight (without battery)	5.5 kg
Size (L x W x H)	245mm x 180mm x 80mm

## Communications

Wireless (as standard)	802.11g / up to 120m range (extendable with repeaters)
Fibre optic (option)	100m, 150m, 200m
Ethernet (option)	25m, 50m

## Imaging Station\*

Type	Laptop computer (ruggedised / tablet options available) <i>* PC specification to be confirmed &amp; agreed at order stage</i>
Processor	Intel Core i5-4200U, Dual Core
Display	15.6" Full High Definition (1366x768) LED Display with AntiGlare
Memory	4GB 1600MHz DDR3L (RAM)
Hard Drive	500GB Serial ATA Hard Drive
Optical Drive	DVD +/-RW Media Bay Drive (option)
Operating System	English MS Windows
Power	Mains and battery

## Software Features

Adjustable x-ray source parameters (kV, mA & time)  
Standard, Inverted and False Colour images  
Rotate, Histogram, Pan, Zoom, DeepFocus™  
On-screen Measurement and Annotation (options)  
Materials Discrimination and 3D Emboss (options)  
Multi-file format import (option)  
Multi-touch functionality for tablet based operation (option)

## Safety

Physical safety interlock plus key switch  
Audible & visible warning signs  
CE compliant

## Certification & Codes

NATO	Codification NSN 6350-99-306-9048
------	-----------------------------------

[www.3dx-ray.com](http://www.3dx-ray.com)

T. +44 (0) 1509 817400 F. +44 (0) 1509 817401 E. [sales@3dx-ray.com](mailto:sales@3dx-ray.com)

3DX-RAY Ltd, 16 & 18 Hayhill Industrial Estate,  
Barrow upon Soar, Leicestershire, LE12 8LD, UK

An **IMAGE SCAN** company

Registered address: 16 & 18, Hayhill Industrial Estate,  
Barrow upon Soar, Leicestershire, LE12 8LD, UK.  
Registered in England No. 3237543.

