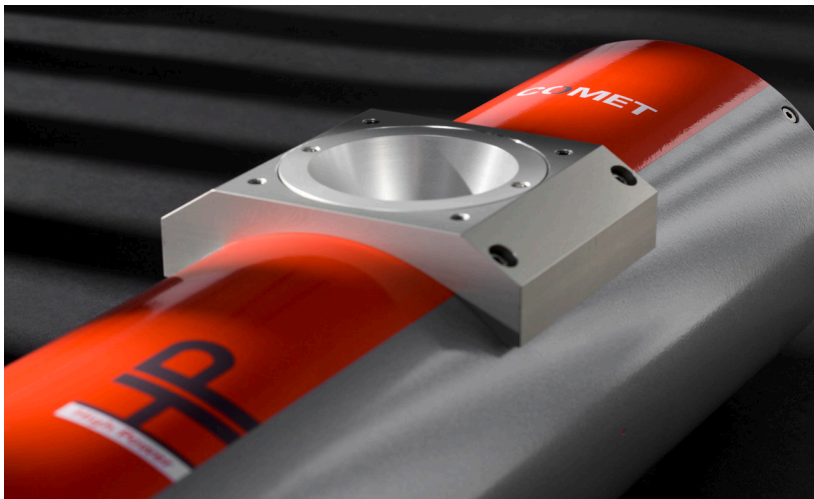


3DX-RAY

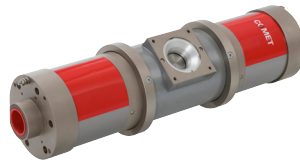


High Powered X-Ray Tubes

- Ceramic and metal ceramic tubes

3DX-RAY is an approved supplier of Comet x-ray tubes

Bipolar



Data
Nominal tube voltage
Continuous rating
Focal Spot acc.EN 12543
Former focal spot design
Filament current, max.
Filament voltage, typical
Inherent filtration
Target material
Target angle
Radiation coverage
Leakage radiation, max.
Cooling medium
Cooling medium flow, min
Anode temperature, max.
Temperature at inlet, max
Weight
Terminal type
Mounting flange
Locking device

MXR-320HP/11AX
320kV
800W / 1800W
d = 0.4mm* / d = 1.0mm
-
4.1A / 4.6A
2.3V / 6.8V
3mm Be
W
11°
40° x 30°
5 mSv/h
Oil
14 l/min
-
50°C
40 kg
R24
4512-104-87141
940303
*Threshold 25%

MXC-451HP/11
450 kV
700W / 1500W
d = 0.4mm* / d = 1.0mm
-
4.1A / 4.6A
2.3V / 6.8V
3 mm + 2 mm Be
W
11°
40° x 30°
5 mSv/h
Oil
14 l/min
-
50°C
45 kg
R28
4512-104-87111
941002
*Threshold 25%

MXR-600HP/11
600kV
700W / 1500W
d = 0.4mm / d = 1.0mm
-
4.1A / 4.6A
2.3V / 6.8V
3mm + 2mm Be
W
11°
40° x 30°
10 mSv/h
Oil
14 l/min
-
50°C
ca. 145 kg
R30
-
-
*Threshold 25%



The broad product range features ceramic and metal ceramic tubes suitable for applications ranging from small portable units to 800kV fixed systems.

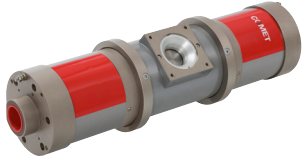
3DX-RAY can advise on the most suitable tube to meet your requirements; and can supply and install a wide range of generators and provide comprehensive aftersales support.

3DX-RAY Ltd is an approved supplier of Comet x-ray tubes.

3DX-RAY Ltd designs and manufactures a range of innovative portable rapid deployment and static x-ray inspection products for the industrial and security markets. Our highly experienced technical staff can advise customers on the appropriate x-ray generators and x-ray systems to meet their needs.

High Powered X-Ray Tubes

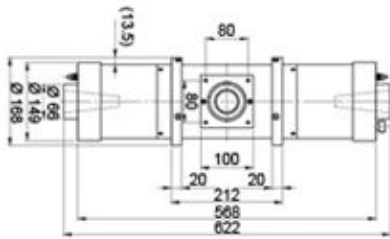
MXR-320HP/11AX



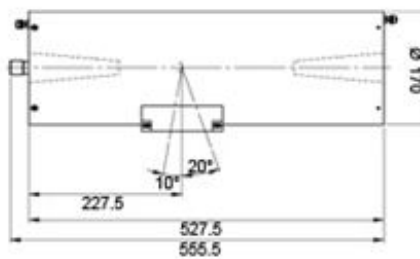
MXC-451HP/11



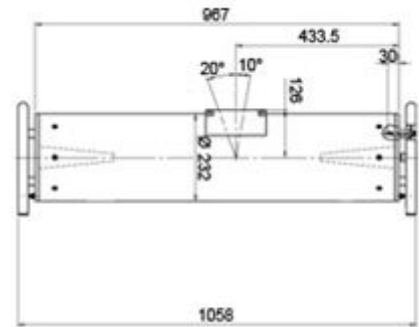
MXR-600HP/11



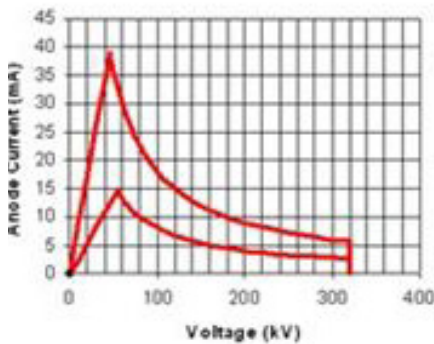
Outline drawing



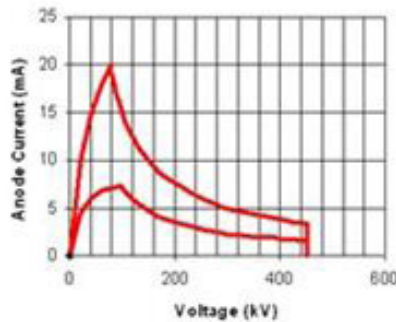
Outline drawing



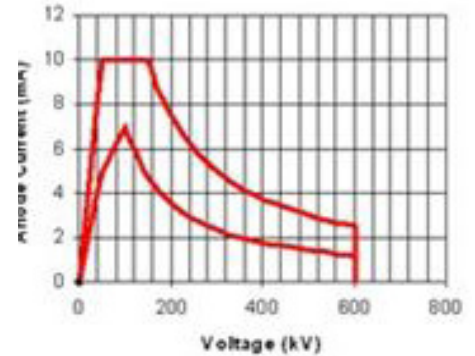
Outline drawing



Output



Output



Output

Further Information

For information about the full range of systems, tubes and generators we can supply contact:

Email: sales@3dx-ray.com

Tel: +44 (0) 1509 817400

Web: www.3dx-ray.com

www.3dx-ray.com

T. +44 (0) 1509 817400 F. +44 (0) 1509 817401 E. sales@3dx-ray.com

3DX-RAY Ltd, 16 & 18 Hayhill Industrial Estate,
Barrow upon Soar, Leicestershire, LE12 8LD, UK

An **IMAGE SCAN** company

Registered address: 16 & 18, Hayhill Industrial Estate,
Barrow upon Soar, Leicestershire, LE12 8LD, UK.
Registered in England No. 3237543.

