

# 3DX-RAY



## FlatScan2-15

- Suspect item inspection
- EOD evaluation
- Customs control
- Vehicle scanning
- Compact panel

Portable, real-time x-ray scanning system

**FlatScan2-15 is a lightweight, portable, battery powered x-ray scanning system designed in co-operation with first responders and EOD teams to meet the needs of the field operative.**

**Quick and simple to deploy, the system produces high quality real-time x-ray images for rapid and accurate decision making.**

The detector panel is positioned behind the target; the generator is placed in front. The scan is activated from the laptop imaging station.

The 297mm x 206mm imaging area of the FlatScan2-15 enables the operator to scan typical bags and packages in a single scan.

Penetrating up to 34mm steel at 120kV the system produces sub-millimetre resolution images.

A range of sophisticated image processing functions, including materials discrimination, pan, zoom, DeepFocus™,

3D Emboss, measurement and annotation, coupled with high quality images enable the operator to interpret the image quickly and accurately.

The software can also communicate the image on screen to a remote command centre and save images in JPEG and other common file formats.

**Ideal for use by First Responders, EOD teams, Counter Surveillance, and Customs and Security Operatives**

### The system comprises

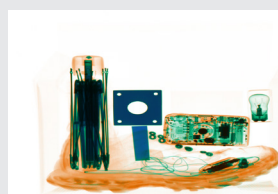
- A resilient detector panel
- A portable and robust x-ray generator
- A laptop imaging station
- Batteries and chargers
- Wireless communication
- Carry cases
- ThreatSpect software

### Features

- High penetration with sub-millimetre resolution
- Compact detector panel
- Real-time images
- Designed for rapid deployment and ease of use
- Powerful image enhancement and analysis tools
- Intuitive, user-friendly ThreatSpect software



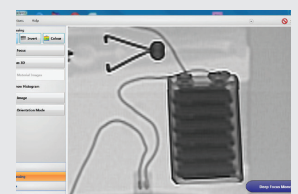
Annotated image



X-ray of shoebox contents

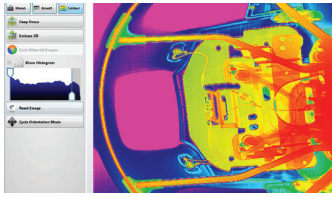


Improvised explosive device in can

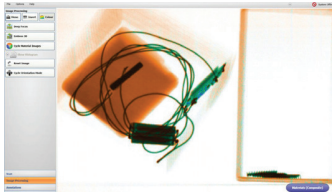


Zoom and DeepFocus

# FlatScan2-15



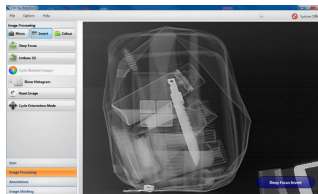
False colour



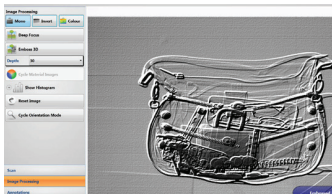
Material discrimination



I-Gen generator with 360° stand



Invert



3D Emboss

## Standard Package

Compact x-ray detector panel, 120kV x-ray generator, laptop computer, ThreatSpect software, batteries, chargers, wireless communication and transport cases.

Options include: tripod, repeater stations, spare batteries and chargers, soft carry cases, wired and fibre optic cable sets.

## X-Ray Detector Panel

Image / detector resolution	512 pixels, 40AWG
Dynamic range	4096 (12-bit)
Image acquisition / scan speed	7 sec
Detector dimensions	434mm x 253mm x 86mm (external) (L x H x D)
Imaging / scanning area	297mm x 206mm
Weight	5kg
Power	Self contained rechargeable lithium ion battery
Communication protocols	Wireless 802.11g / Bluetooth Wired or fibre optic options, TCP/IP ethernet
Operating temperature	-10°C to +40°C / MIL-STD-810F 501.4 and 502.4
Bump test	IEC 60068-2-29:Test Eb
Humidity	0% to 95% non-condensing
Ingress protection (water, dust)	Designed to IP55

## X-Ray Generator

Type	1mA constant potential 120kV
Power	Self contained rechargeable cells Up to 180 images on one charge (2 hour charge) Mains power option
Penetration	30mm guaranteed, 34mm typical
Weight (without battery)	5.5 kg
Size (L x W x H)	245mm x 180mm x 80mm

## Communications

Wireless (as standard)	802.11g / up to 120m range (extendable with repeaters)
Fibre optic (option)	100m, 150m, 200m
Ethernet (option)	25m, 50m

## Imaging Station\*

Type	Laptop computer (ruggedised / tablet options available) <i>* PC specification to be confirmed and agreed at order stage</i>
Processor	Intel Core i5-4200U, Dual Core
Display	15.6" Full High Definition (1366x768) LED Display with AntiGlare
Memory	4GB 1600MHz DDR3L (RAM)
Hard Drive	500GB Serial ATA Hard Drive
Optical Drive	DVD +/-RW Media Bay Drive (option)
Operating System	English MS Windows
Power	Mains and battery

## Software Features

Adjustable x-ray source parameters (kV, mA & time)  
Standard, Inverted and False Colour images  
Rotate, Histogram, Pan, Zoom, DeepFocus™  
On-screen Measurement and Annotation (options)  
Materials Discrimination, Stitching and 3D Emboss (options)  
Multi-file format import (option)  
Multi-touch functionality for tablet based operation (option)

## Safety

Physical safety interlock plus key switch  
Audible & visible warning signs  
CE compliant

## Certification & Codes

NATO codification NSN 6350-99-152-8965

[www.3dx-ray.com](http://www.3dx-ray.com)

T. +44 (0) 1509 817400 F. +44 (0) 1509 817401 E. [sales@3dx-ray.com](mailto:sales@3dx-ray.com)

3DX-RAY Ltd, 16 & 18 Hayhill Industrial Estate,  
Barrow upon Soar, Leicestershire, LE12 8LD, UK

An **IMAGE SCAN** company

Registered address: 16 & 18, Hayhill Industrial Estate,  
Barrow upon Soar, Leicestershire, LE12 8LD, UK.  
Registered in England No. 3237543.

