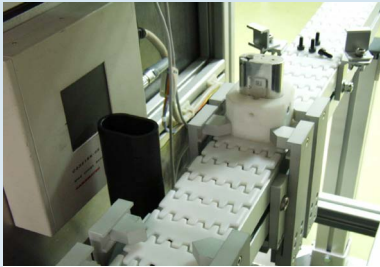


X-Line HRS

HIGH RESOLUTION INDUSTRIAL INSPECTION

High resolution x-ray inspection



Battery production line integration

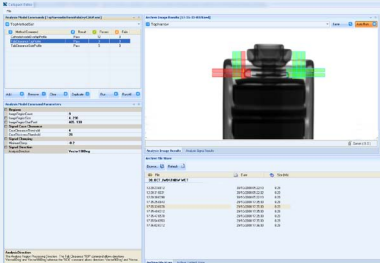
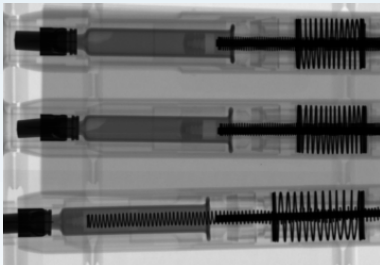
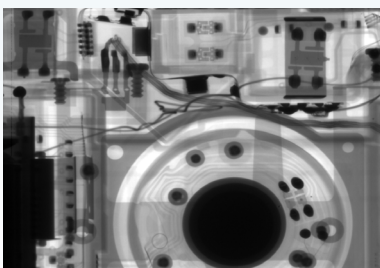


Image analysis



Pharmaceutical devices



Complex assembly

X-Line HRS

X-Line HRS is a high resolution x-ray inspection system for production lines and laboratories. Designed for general purpose inspection the X-line HRS system is ideal for non-destructive testing and verification of complex assemblies and product integrity.

Detect, Measure, Analyse

- Correct alignment
- Correct size
- Correct assembly
- Defects
- Contamination
- Product Coatings
- Presence/absence

Features

- Manual, robot or conveyor feed options
- 100% inspection at production line speeds
- Off line inspection facility
- Fault detection and image comparison for go/no-go inspection

X-Line HRS offers the capability to detect, measure and analyse features hidden from view and confirm the quality, integrity and safety of your product.

High Quality Data for Quality Assurance and Process Control

- Automated analysis to provide real-time pass/fail decisions
- High quality data for export to QC/SCADA/SPC systems
- Integration with factory systems

Controlling quality with the X-Line HRS battery inspection system can save costs by dramatically reducing, or even eliminating faults and preventing product recall.



Turnkey x-ray system



Switch mechanism

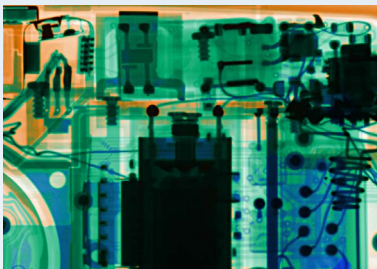


Image processing

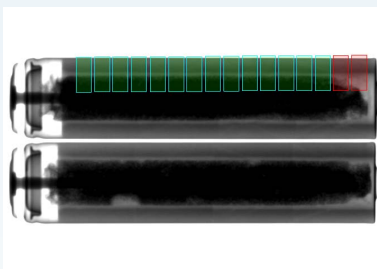


Image analysis



Pass/reject decision

System Data	
X-ray source	Typically 150 Kv, 1.2mA
Power	180 to 640 Watt
Switch on time	250msec
Resolution	50µm
Dynamic range	4096 (12 bit)
Stage motion	Vertical and rotation
PC	19" rack mounted
PC operating system	Windows XP
Network interface	Ethernet IP
Power	110/220v AC, 50/60Hz
Weight	500kg, dependant on required configuration
Dimensions	1330mm x 1320mm x 820mm , dependant on required configuration
Data Storage	
Hardware	Factory network or external PC
Database	SQL
X-Ray Safety	
	Physical safety interlock plus key switch
	Audible & visible warning signs
	Designed to conform to Ionising Radiation Regulations, 1999, (UK)
Environmental	
Operating temperature	10° C to 30° C
Survival temperature	0 ° C to 40° C
Relative humidity	5% to 90% non-condensing
Software	
	Windows XP
	Image capture / display / save
	Motion control
	Auto callibration
	Pre-set capture modes
	System status notification
Optional Packages	
Data analysis package	Create and store inspection parameters Export analysis parameters and data sets 'Region of interest' analysis.
Automation Package	Create and store workflows Create, capture and analyse sequences Process results and data save (auto-export to SQL database)
Data Viewer	Monitor image datasets and analysis in real time Remote operation over network

In the interest of product development, 3DX-Ray Ltd reserves the right to change specifications without notice.