

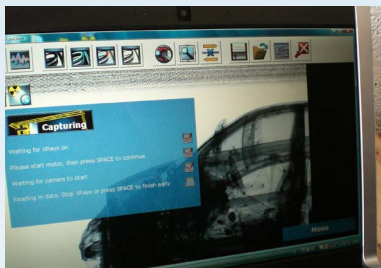
# SVXi

VEHICLE SCANNING    CHECKPOINTS & BORDERS  
CUSTOMS CONTROL    THREAT DETECTION

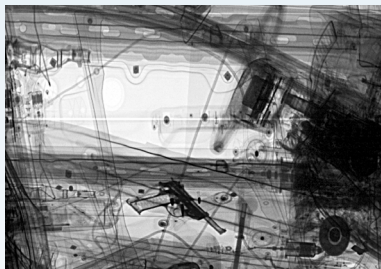
## Small vehicle inspection



SVXi mobile vehicle inspection



Real-time image on screen



Gun in vehicle



SVXi x-rays van

## SVXi

SVXi is a rapid deployment mobile x-ray system suitable for scanning vehicles up to the size of a small van.

Designed for maximum flexibility, the SVXi x-ray system is offered in both static and mobile configuration, to provide cost effective solution for security screening of vehicles at a variety of locations.

### Key Features

- Sub-millimetre resolution images
- Typical setup time 15 minutes
- Intuitive operation
- Powerful image processing
- Mobile system for flexible deployment
- Typical scan time 1 minute

### Typical Deployment

- Security checkpoints
- Border Control
- Customs
- Events
- High security premises
- Forensic inspection

Designed to meet the needs of security and customs personnel, SVXi produces high resolution images of a vehicle in a single pass.

Thorough physical searching of a vehicle can take many hours. The SVXi system allows security personnel a detailed view of the inside of the whole vehicle in a single scan.

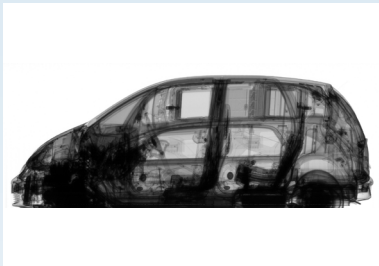
The operator is able to control the unit and view the images from a remote laptop imaging station. Sophisticated easy to use software allows the operator to zoom, pan and process the image to be able to make a rapid accurate assessment of any potential risk.

Designed for maximum flexibility, the SVXi can be mounted on a range of transportation for mobile deployment. Once at its destination it can be set up and operational in 15 minutes.

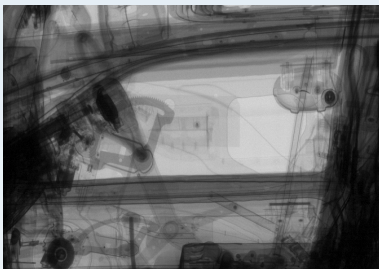
SVXi can be deployed at key locations across an entire region to combat smuggling. SVXi is also suitable for event and venue security, enabling security personnel to see what is being taken on and off site without the need for intrusive hand searches.



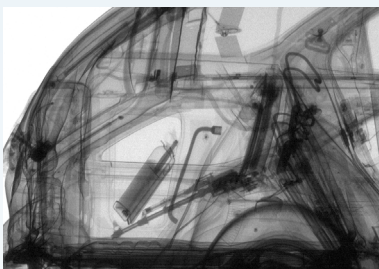
SVXi x-rays car



Scanned vehicle



Detail from scan



Threat item in vehicle



SVXi

Standard Mobile Configuration	
	Motorised trailer mounted x-ray imaging unit with wired or wireless remote imaging and control station.
	Unit weighs less than 3.5 tonnes and can be towed by a suitable vehicle.
Fixed Configuration	
	Fixed x-ray imaging unit with wired or wireless remote imaging and control station.
X-ray Generator	
Anode voltage	250kV, (320kV option)
Steel penetration	Typically 55mm (320kV option)
X-Ray Detector Panel	
Image resolution	1.0 mm
Dynamic range	4096 grey levels
Image acquisition/scan speed	45 seconds to 120 seconds
Gantry area	2.5m x 2.7m x 5m (width x height x length)
Communications	
Wi - Fi repeater	up to 200m
Wired link	up to 50m
Fibre optic link	up to 200m
Power	
Mains power	110/220 Vac, 50/60Hz
On-board generator (option)	Petrol or diesel options
Environmental	
Operating temperature	0°C to +40°C
Low temperature pack (option)	- 40°C to +40°C (LT)
High temperature pack (option)	0°C to + 55°C (HT)
Relative humidity	0% to 95% non-condensing
Operation	
Typical throughput	45 vehicles per hour (typical 5m long vehicle)
Set up time	Typically 15 minutes
Report and control	Wired, wireless or fibre optic with remote imaging and control station
Imaging Station	
Type	Laptop
Processor	2.4GHz, 3MB, Dual Core
Memory	RAM: 2048MB, Hard Drive: 250GB Optical Drive: 8X DVD+/-RW Drive
Display	Laptop, 15.6 inch, High Definition+ (1600 x 900) External 21.5 inch (optional) High Definition (1920 x 1080)
Operating system	Microsoft Windows 7
Power	Mains and battery
Imaging	
Materials discrimination	Dual energy (optional)
Image processing	Pan, zoom, DeepFocus™, image filters, variable contrast
Image archiving	Automatic image archiving and image review
X-Ray Safety	
	Radiological safety cordon subject to site survey Audible and visible warning sign, physical safety interlocks

*In the interest of product development, 3dx-ray Ltd reserves the right to change specifications without notice.*