

MailScan

MAIL SCREENING PACKAGES LETTERS
SUSPECT ITEM INSPECTION

**Cabinet x-ray systems
for mailrooms**



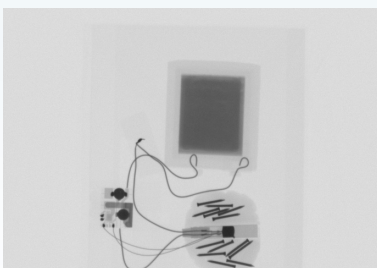
Desktop cabinet



Midi cabinet



Screenshot of powder in envelope



IED in greetings card

MailScan

MailScan systems are cabinet based x-ray systems for screening mail, parcels and small baggage for potentially harmful items and contraband.

Key Features

- Large inspection chamber, small footprint
- Simple operation
- On-screen training module
- Suspicious package indicator chart
- Unrivalled image resolution
- Industry leading image processing software

Image processing

- Image rotation, panning, background artefact removal
- Measurement tools including density
- Powder inspection
- Image archiving
- User configurable image enhancement features

Screening mail, parcels and baggage for potentially harmful items and contraband is easy with MailScan x-ray systems.

Designed for environments where space is at a premium MailScan equipment offers large inspection chambers and imaging areas whilst retaining a small footprint.

- MailScan D : 920 x 410 x 466 mm
- MailScan M : 1420 x 495 x 640 mm
- MailScan G : 1522 x 555 x 720 mm

Unrivalled image resolution and industry leading image processing software together with powder detection allow the operator to analyse items quickly and easily.

MailScan systems are simple to operate and are supplied with an on-screen training module.

3DX-Ray Ltd offer a range of optional service and support and training plans.

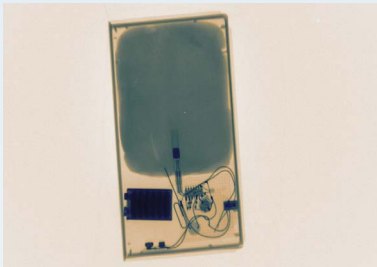
Suitable for detection of improvised explosive devices (IEDs), razor blades, weapons, powders, biochemical threats, and contraband such as drugs.



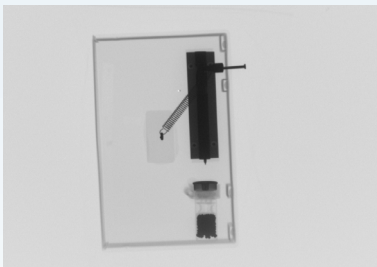
Grande cabinet with optional monitor stand



IED in postal tube



IED in video box



Letter bomb



Mobility floorstand with optional monitor and printer

MailScan G cabinet dimensions (height x width x depth mm)

External dimensions	1522 x 555 x 720
Chamber size	655 x 550 x 655
Viewable area	480 x 640

MailScan M cabinet dimensions (height x width x depth mm)

External dimensions	1420 x 495 x 640
Chamber size	534 x 485 x 585
Viewable area	420 x 560

MailScan D cabinet dimensions (height x width x depth mm)

External dimensions	920 x 410 x 466
Chamber size	370 x 402 x 413
Viewable area	294 x 392

Imaging station

Image resolution	up to 1600 x 1200 pixels
Standard display	22" widescreen TFT
Touch screen operation	Yes
Wire resolution	40AWG
Steel penetration	2mm

Imaging Software Features

Image rotation, panning, background artefact removal
Measurement tools including density
Powder inspection
Image archiving

X-ray specification

Beam orientation	Vertical, downwards
Nominal anode voltage	70-90kV
Nominal anode current	5mA
Cooling	Sealed oil bath

Operating environment

Operating temperature	0 °C to 40 °C
Storage temperature	-15 °C to +50 °C
Relative humidity	85% non-condensing

Health & safety

Radiation	Less than 1µSv/hr
Safety	Conforms with Ionising Radiation Regulations, 1999 (UK)
Media safe	Complies with applicable international health and safety regulations
	Yes

In the interest of product development, 3DX-Ray Ltd reserves the right to change specifications without notice.

About 3DX-RAY

3DX-Ray Ltd designs and manufactures a range of innovative portable, rapid deployment and static x-ray inspection products for the security market. Designed in collaboration with security personnel and government organisations. 3DX-Ray products combine high quality images with intuitive, user-friendly image processing software.

Our global customers include airports, police, security services, bomb disposal, cargo handlers, freight forwarders, corporate HQs, events operators, ports and prisons, military and police.

